

CONTENTS

	Page
Contact Points	Inside Front
Letter from Director of People Services	2
Contacts In Neighbouring Authorities	3
Herefordshire Choice Advisory Service	4
About High Schools In Herefordshire	6
General Admission Arrangements for High Schools	7
Transfer to High School	9
Allocation of Places in High Schools	13
School Transport up to the age of 16	18
Post 16 Education, Transport and Careers	25
National Curriculum and Assessment Arrangements	29
Charges, School Meals, and Allowances	32
Education Welfare Service and School Uniform	34
Special Education Needs	35
Special Schools	39
Transport for Pupils and Students with Special Education Needs	40
Procedures for dealing with parental concerns or complaints about individual schools	42
Map of Herefordshire	44
Open Days Evenings for Phase Transfers 2012-2013	51
Appendix 1 - Local code of practice for admissions authorities and schools concerning contacts with parents on pupil admissions, transfers and exclusions	
Appendix 2 - Co-ordinated secondary admission arrangements	
Appendix 3 - Information about schools in each district of Herefordshire	
Appendix 4 - Admission policies of voluntary aided schools, academy and Foundation	
Appendix 5 - Admission policies for admissions to school Sixth Form	
Appendix 6 - Quick reference guide to provided schools for parishes in Herefordshire	
Appendix 7 - Post 16 Transport – Policies	
Appendix 8 – Fair Access Protocol	
Appendix 9 - Data Protection Act – Notice of Fair Processing	

EDUCATING YOUR CHILD

Moving on to high school is one of the most important events in any child's life. At this time, you are naturally concerned to do the best for your children, but you may feel uncertain about what to do. Our aim is to make it as easy as possible for parents to understand the procedures involved.

Most parents prefer their children to go to the local school and a place can nearly always be found for them without difficulty. Sometimes, however, parents prefer a school outside their own area but may find that all the places have to be allocated to local children. Inevitably, therefore, some parents have to be disappointed.

This booklet contains all the information you need to understand the arrangements for the transfer of children to Herefordshire High schools. It explains the rules and procedures the Council has to follow to ensure that the system works as fairly as possible for every child. The rules and procedures have been agreed by the Local Admissions Forum through which the Council, Diocesan Education Authorities, Church schools and community schools work closely together to produce the best possible arrangements for parents. The rules and procedures are particularly important when more parents apply for a particular school than there are places available.

In the booklet, you will find details about -

- How the County's admission arrangements work, the admissions timetable for the 2012-2013 school year and the options that are open to you.
- Details of all maintained schools in the County, including the number of children that can be admitted to each high school in the 2012-2013 school year.
- Information about the Church of England, Roman Catholic aided, Foundation and Academy schools and what you have to do to apply if you would like your child to attend one.
- Information about special education
- Information about school and college transport
- Other issues to do with schools – school uniform requirements and how parents can discuss concerns with individual schools

Staff in Children & Young People's Services Directorate do all that they can to offer a friendly and efficient service to parents. Short leaflets are also provided to explain the most important points parents need to bear in mind when they apply for a place in a primary or secondary school. Please get in touch with us if you need any help or advice, using the contact points shown inside the front cover of this booklet.

DIRECTOR OF PEOPLE'S SERVICES

September 2011

CONTACT DETAILS FOR NEIGHBOURING AUTHORITIES

Gloucestershire LA

Admissions & Transfers Team
Children & Young People's Directorate
Shire Hall
Gloucester GL1 2TP
Tel: 01452 425407
Fax: 01452 425713
Email: school.admissions@gloucestershire.gov.uk

Shropshire LA

Admissions Team
Learning and Skills
The Guildhall
Frankwell Quay
Shrewsbury SY3 8HQ
Tel: 03456789008
Fax: 01743 254500
Email: school-admissions@shropshire.gov.uk

Worcestershire LA

Pupil Admissions & Transfers Section
Children's Services Directorate
P.O.Box 73
Worcester
WR5 2YA
Tel: 01905 765765
Fax: 01905766776
Email: schooladmissions@worcestershire.gov.uk

Powys LA

Admissions & Transport Team
Schools Service
Powys County Council
County Hall
Llandrindod Wells
Powys LD1 5RG
Tel: 01597 826455. / 826477/ 826449
Fax: 01597 826475
Email: admissionsandtransport@powys.gov.uk

Monmouthshire LA

School & Student Access Unit
Directorate for Children & Young People
Monmouthshire County Council
5th Floor County Hall
Croesyceiliog
Cwmbran Torfaen
NP44 2XH
Tel: 01633 644508
Fax: 01633 644488
E-mail schoolandstudentaccessunit@monmouthshire.gov.uk

Herefordshire Choice Advisory Service

Within Herefordshire a Choice Advisory Service offers help and guidance on the schools admissions process to parents and carers of young people transferring to secondary school

The aim being to:

- Make the process clearer
- Listen carefully to parents/carers and provide free, confidential and impartial advice
- Discuss all options available so that informed choices can be made
- Provide help and advice when filling in application forms and making appeals

For further information please contact:

Choice Advisory Service

Telephone: 01432 260955

External Advisory Service

The Advisory Centre for Education (ACE) provides free, independent advice on the admissions process and a range of education issues including bullying, exclusion, SEN and attendance.

For advice, enquirers should text the phrase **AskACE** to 68808 and follow instructions, or call 0808 800 5793 Monday - Friday, 10am – 5pm. For further information visit www.ace-ed.org.uk

1: HIGH SCHOOLS IN HEREFORDSHIRE

Herefordshire has 14 high (all of which are comprehensive day schools for both boys and girls), and 3 special schools, which are also for boys and girls. A full list of maintained schools in Herefordshire is given in Appendix 3 at the back of this booklet.

Admissions to community and voluntary controlled schools are on a non-selective basis. All such schools have defined catchment areas. Different admission arrangements apply to Voluntary Aided, Academies and Foundation schools where the Governing Bodies make the decisions.

- **HIGH SCHOOLS (age ranges 11-16 or 11-18)**
There are
? high schools are community schools,
? voluntary aided (1 Church of England, 1 Roman Catholic)
? Academy
? Foundation.
The high schools in Kington, Ledbury, Leominster and Ross have their own Sixth Forms. At the other high schools, the pupils generally move at 16+ to a Sixth Form College or to one of the further education colleges.
- **SPECIAL SCHOOLS**
There are 3 special schools for children with Statements of special education needs (SEN). Admissions are arranged in consultation with the parents.

Extended Schools

Extended schools are schools that provide a range of services and activities for children, young people, families and communities. Schools are ideally places to provide access to a range of activities, opportunities and support. Services that may be available are: access to quality childcare: parenting support including family learning sessions, parenting programmes and information sessions at key transition points: swift and easy access to a wide range of specialist support such as homework clubs, arts, sports, special interest clubs and play opportunities: community access to ICT, sports and arts and adult learning facilities.

The government vision is that by 2010 all schools will provide access to extended services. Schools however are not expected to provide all services on their own but to work in partnership with nearby schools, organisations and agencies across local areas

2: GENERAL ADMISSIONS ARRANGEMENTS FOR HIGH SCHOOLS

This short Chapter explains the terminology and general rules affecting secondary schools. Chapter 4 explains how the specific admissions arrangements work for secondary schools, and includes the timetable for entry to schools in September 2012.

ADMISSION ARRANGEMENTS TO SCHOOLS

- **Catchment Areas**

Each community, foundation, academy and voluntary controlled school serves a defined catchment area. That is also the case for most voluntary aided schools, although they also have a commitment to children whose parents are applying for a place on grounds of their religion or denomination. Details can be found in the school's prospectus. Children whose parents apply on time are given priority for a place at the school serving their ordinary place of residence unless their parents ask for a place at a school in another area. The procedure for expressing a preference is given in chapter 3. **All parents must express a preference.** Catchment areas are kept under review and may be changed from time to time. Changes are made only after careful review and consultation with parents, schools and local communities.

Please note The Steiner Academy does not have a catchment area, and is a through school Primary to Secondary

St Marys RC High does not have a catchment area

- **Ordinary Place of Residence**

A child's ordinary place of residence is the address at which the child normally lives. **There are some rules, which apply when a child moves to a different address.** Those rules may affect a child's entitlement for school admission. Please contact the Pupil Admissions Office if you have any queries about changes of address.

- **Change of Home Address**

If you move house, your child may remain at the school at which they are registered, should you so wish, but you may not be eligible for free transport if the move is to a property outside the catchment area. When families with children of school age move into a new area, and wish to transfer their children to a different school, parents should at the earliest opportunity either ask at schools in the area or contact the Pupil Admissions Office. Even if parents apply for the school provided for the child's home address, a place cannot be guaranteed if the year group is full. In these situations the Council may designate an alternative primary school or the parents may decide to use the appeal process.

- **Published Admission Numbers (PAN)**

Each school has an admissions number, which is the number of pupils that the school can admit each year. **Published admission numbers** for each school are shown in Appendix 3. The admissions number will be taken into account by the Council and the Governing Body of a voluntary aided, academy and foundation school when considering applications from parents. Some applications will be turned down if the total number of applications is greater than the published admission number. In such circumstances, parents have a right of appeal.

- ***Definition of 'Sibling'***

Paragraph 4.1 on page 12 sets out the Council's oversubscription policy and category 4 defines the brother/sister qualification. To qualify under this category a sibling connection refers to a brother or sister, half brother or sister, adopted brother or sister, step brother or sister, or a child of the parents/carer's partner, and in every case the child should be living in the same family unit at the same address. However the Council will consider applications for foster children under category 4 of the oversubscription policy if there are special circumstances to maintain the importance of daily family life.

- ***Additional/supplementary information forms***

All parents who list their preferred schools on the Local Authority Common Application Form are regarded as having made valid applications. An (SIP) Supplementary Information Form may also have to be completed for applicants to be considered under faith criteria of faith schools. (St Marys RC High School and Bishop of Hereford Bluecoat School)

3: TRANSFERS TO HIGH SCHOOLS

Children are normally admitted to secondary school at the beginning of the school year following their 11th birthday. In very exceptional cases, early or late admission is possible, where it is agreed between the school, the parents and the Council that this would be in the best interests of the child. However, it is rarely advisable for a child to transfer early to high school. When making its decision the Council would have regard to the child's physical, mental and psychological well being before agreeing to the request.

3.1 When and How Should You Apply For A Place in A High School

During the child's last year in primary school (i.e. Year 6) the following action is taken: Parents will be invited to indicate **3 preferences** on the common application form (SA1). Parents will be able to give reasons for their preferences and will also be asked to name their chosen schools in order of preference.

Early September

The Pupil Admissions Office sends parents, via the child's current school:

- Information about the school provided for the child's home address
- The official application form (SA1)

31st October 2011 Closing date for parents to return the application form via the child's school, if not at a school then directly to the Pupil Admissions Office. Applications are needed from all parents regardless of what school you are applying for. This form will also be used by parents living in Herefordshire seeking a school in another Local Authority. Herefordshire has an agreement that the Herefordshire closing date of 31st October will also be acceptable in Monmouthshire and Powys. Gloucestershire, Shropshire and Worcestershire have the same closing date.

1st March 2012 This is the "national offer day" for secondary schools. All parents who complete a secondary application form will be told of the allocated high school for their child on this day.

Late Applications Late applications received after the 31st October 2011 and the national offer date will be included **only if** the reason for the delay was genuine and acceptable. Late applications, including applications received after 1st March 2012, will be considered only after the initial offers to parents who applied in time have been decided.

3.2 How Many Pupils May Be Admitted To Each High School?

The Council has a duty to ensure that schools are not overcrowded. The number of pupils that may be admitted to a school is known as the **Published Admission Number (PAN)**. Details for each school are given in Appendix 3 of this booklet. The admission number is critical to the admissions process, as the relevant admission authority has to offer places to all applicants within the admission number. An applicant for a place cannot be refused if the admission number has not been reached. The Department of Education have indicated in their Code of Practice that these numbers should not be exceeded unless the circumstances are exceptional and only then after the matter has been considered by the Local Admission Forum.

3.3 How Do Parents Apply For A Secondary School?

Having read all the information available from the Council and from individual schools, and, if possible, having visited schools by attending open evening or by making other arrangements with the headteachers, parents should indicate **three preferences in priority order** on the SA1 application form, or apply on line.

However, you need to consider carefully **how your child will travel to school** as you will not normally be eligible for transport assistance if your child is offered a place at a high school which is not your catchment school for your home address (See Chapter 5 for details of the Council's School Transport policy).

On Line Admissions

Parents can now apply on line for places in Year 7 at Herefordshire High Schools starting in September 2012. By making an application on line parents do not then have to complete the paper application form that is circulated at the beginning of September 2011.

Applications can be made on line at www.herefordshire.gov.uk

By going to > Education and Learning > School Admissions > Admissions 2012 > Online application forms

click on the online application form, this then takes you into > Welcome to Enrol (on line admissions applications). You need to create an account before you can Login in. Once an account has been created you then go into your account by using the Login tab. You can change or view your account up until midnight on the closing date 31st October 2011.

Useful tips are highlighted in Blue when applying online.

Please note that if you do apply online you must click the submit button at the end, otherwise the application will not get submitted into the system, you will need to do this each time you change anything on the application.

You will receive 3 email conformation

1st when you have submitted the application 2nd when we download the application after the closing date 3rd informing you of the offer of school place on the 1st March or closest date if falls on a weekend

3.4 Do you need further advice and help?

Please contact the admissions team in the first instance if you require further advice regarding any issues you may have on 01432 260926/925.

Alternatively you can also contact The Choice Advisory Service within the Parent Partnership Service on 01432 260955 who will offer advice, support, help and information relating to the transfer from primary to secondary school to parent's / carer's. As applying for a place at a school can be a very stressful time.

3.5 Can we apply for a place at a Church School

Yes. There are 2 Church Schools in Herefordshire: The Bishop of Hereford's Bluecoat School, which is Anglican, and St. Mary's R.C. High School, Lugwardine, which is Roman Catholic. You can include one or both of these schools **within** the 3 preferences you are able to express on the SA1 form. You will be required to provide additional information if your request is based on denominational reasons. If applying for a church place at The Bishop of Hereford Bluecoat School you will need to contact your local priest or minister.

For a non catholic or catholic form, you will need to contact the St Mary's RC High school directly. This form must be returned together with the SA1 by 31st October 2011 via your child's present school, or directly to the Admissions Section if your child attends a primary school in another Local Authority or in an Independent School.

3.6 What Are The Possible Difficulties If Your 3 Preferences Do Not Include The School Provided For Your Child's Home Address?

As previously stated, parents will be able to express 3 preferences for the September 2011 transfer. Parents are asked to consider naming their catchment school as one of their 3 preferences. If they do not and they are unsuccessful with their other preferences it may be that there are no places left at their catchment school after offers are made. The child may then have to attend another school altogether which may involve the parents having to meet the cost of transport. For these reasons, it is advisable for parents to include the catchment area school as one of the 3 preferences.

3.7 Who Will Make and Announce the Decision, In Response to My 3 Preferences?

Herefordshire Council will make the decision on school places for the community high schools based on the criteria defined in paragraph 4.1. In the case of The Bishop of Hereford's Bluecoat, St. Mary's R.C, Wigmore High School and The Hereford Academy, the Governing Body will make the decision based on the application forms (SA1) and additional supporting information that the Council received by 31st October 2011. Once the Governing Body have made their decision the Council will be given the school allocation list and it will be the Council that will announce the offer to parents on 1st March 2011 on behalf of the Governing Body.

A parent living in Herefordshire, but wanting a place in another Council area, should nevertheless state their preferred out-county school(s) on the standard application form (SA1) or online application form. The Herefordshire Pupil Admissions Office will notify the other Council(s) of the preference after the 31st October 2011, even if the closing dates are different. Although Herefordshire LA implemented the co-ordinated scheme from September 2004, this is not the case with all Local Authorities. Monmouthshire and Powys have decided to delay the co-ordinated scheme, which means that parents could receive an offer or refusal of a place before 1st March 2012. However, this will not be the position in Shropshire, Gloucestershire and Worcestershire, where a parent seeking a school place in that Council area would receive an offer or refusal from Herefordshire Council on 1st March 2012.

3.8 What Is the Co-ordinated Admissions Scheme?

The 1998 Schools Standards and Framework Act, as amended by the Education Act 2002, requires every LA to draw up a scheme (or schemes) covering every maintained school (but not special schools) in its area. Regulations also require Local Authorities to exchange specified information on applications with their neighbours. The Herefordshire Scheme is set out at Appendix 2 of this Booklet.

Parents must be invited to express at least 3 preferences, which may be for schools within or beyond their home LA's area, on a 'common application form' which the LA should provide and make available to all parents resident in its area. This may be complemented by a form on the LA's website for online applications. The Herefordshire Website address is www.herefordshire.gov.uk The common application form can be supplemented (but not

replaced) by additional forms where particular schools in the area might need extra information, e.g. to assess denominational commitment. The LA must ensure that the form enables parents/ carers to:

- express their preferences, i.e. name the schools they are applying to;
- give the reasons for applying for their preferred schools; and
- rank those preferences – parents must be allowed the opportunity to rank their preferences, even if other admission authorities in the area do not use a ranking system as part of their individual admission arrangements.

3.9 If My Preferred School Is Independent Should I Include It On The Application Form?

No, you should make direct application to the headteacher of the Independent school not Herefordshire Council. However, we would recommend that you still indicate three preferences for maintained schools on the application form just in case you decide not to go forward with your application or do not accept an offer of a place at an independent school. If you gain a place at an Independent school, you will be responsible for your own transport costs together with any fees associated with your child's attendance at that school. If you are offered, but turn down, a place at an independent school, the LA accepts no responsibility for any financial loss incurred.

3.10 If My Preferred School Is In Another LA, Should I Include It On The Application Form?

Yes, the co-ordinated admission scheme allows parents to express a preference for any maintained school including those administered by another Council. If you wish your child to be considered for a school in Gloucestershire, Monmouthshire, Shropshire, Powys, Worcestershire please include the name of the school and its ranked position on the application form SA1, this also applies if you are applying for a school in another Local Authority.

3.11 Can Applications Be Considered For Pupils Who Do Not Live In Herefordshire?

Any applications for the admission of pupils who live outside the county are always considered on an equal basis. In the case of secondary transfer for children at age 11, parents should apply to their home Local Authority who will send the details to Herefordshire after the closing date for that Council area. If the preferred school in Herefordshire is oversubscribed, such applications will be determined in accordance with the priorities listed in paragraph 4.1. In the case of Shropshire, Gloucestershire and Worcestershire residents, those Councils will make offers for a Herefordshire high school to their residents on 1st March 2012.

3.12 What evidence do I need to supply if moving house within Herefordshire or moving into Herefordshire at the time of applying for a transfer to Secondary School?

A copy of a utility bill or council tax bill (with name) is sufficient.

If you are moving due to purchasing a property, written confirmation from your solicitor is required, detailing that you have exchanged contracts and the actual or expected completion date. If you are renting, a copy of a signed tenancy agreement is required, with written confirmation from the letting agency or estate agency, with a start date and end date.

Please note that short-term tenancy agreements or temporary moves to live with relatives to create an in area status will not be accepted. Short term is defined as less than 6 months.

Evidence of moved is required no later than the 10th February 2012

3.13 What happens if parents / carers disagree on preferences for their child?

Where the authority receives application forms from more than one parent or carer, and where different schools are requested as the preferred choice, the authority will write to both parents / carer's and inform them that unless written confirmation from both, setting out their agreement to a contrary course of action (*that they both agree on the same school*) the authority will act on the basis of the preference from the parent with whom the child lives. Where a child has more than one residence the preference from the person who is in receipt of Child Benefit will be acted upon.

4: ALLOCATIONS OF PLACES IN HIGH SCHOOLS

Although the School Standards and Framework Act 1998 gives parents the right to express preferences for their child to be admitted to any school maintained from public funds, there are 3 reasons why one or more of their 3 preferences might have to be refused:

- i) the school(s) might be oversubscribed;
- ii) the child does not meet the requirements of the admissions policy or subsequently fails to do so;
- iii) information provided by the parents (including information about addresses) is found to be fraudulent or intentionally misleading (such information may also be grounds for withdrawal of any place that has been allocated, even after the child has started at the school).

4.1 What happens if the school is oversubscribed?

Children with a Statement of Special Education Needs which names a particular school will be allocated places, after which places are allocated according to an agreed set of criteria, in strict order of priority below.

Priority 1 - Looked After Children - Children in the **looked after system** where the approved agencies agree that the preferred school meets the child's social, pastoral and educational needs (see footnote 1)

Priority 2** - Children living within the **defined catchment area** of the school (see footnote 2)

Priority 3** – Sibling connection – Children who have a **older sibling** at the preferred school not only at the time of application but also when the younger child is due to start (see footnote 3)

Priority 4 – Exceptional circumstances – Children with the exceptional **medical, social** or **compassionate** grounds for admission and whose parents can show that entry to a particular school are necessary for the well being of their child. Parents are required to produce a medical certificate or other appropriate information preferably from an independent source. The supporting evidence should set out the particular reason why the school in question is the most suitable and the difficulties that would be caused if the child had to attend another school. Applications on such grounds will not be considered by the Director of Children's Services or appointed advisory panel unless this supporting information is attached to the application form received by the 15th January 2011(see footnote 4)

Priority 5 ****– **Distance** - Children who live **nearest** to the school by the shortest available walking route (see footnote 5)

General Notes

No priority is given to pupils living outside but attending a primary school within the catchment area of the relevant high school, i.e. the determining factor is the child's home address.

Footnote 1: *This is the 1st priority because the Council wishes to protect children in public care from further disadvantage that can arise from possible changes of school when the care placement changes.*

Footnote 2: *This is the 2nd priority because the Council gives high importance to try to ensure that children are able to attend the school within their local community.*

Footnote 3: *This is the 3rd priority to recognise the importance to daily family life, including travel arrangements, of having brothers/sisters at the same school where possible. The rule is **not** intended to favour parents with a previous but no longer current family connection with the school.*

Footnote 4: *This is the 4th priority to be sensitive to exceptional needs that individual children and families may have.*

Footnote 5: *The 5th priority is a measurable, objective way of allocating the remaining places.*

Where, at any school, applications exceed the number of places, the priorities will be applied in the sequence indicated above, i.e. after children in the 'looked after' system it will be catchment area children second, siblings third, special reasons fourth, then according to distance, each assessed as indicated above.

Following the allocation of the top category, there may be an occasion when it is not possible to offer places for all children living in the catchment area. In that situation, the places will be allocated in the sequence of the criteria listed above, i.e. first to children with brothers and sisters who would still be at the school in September 2011, next to pupils with validated medical, social or compassionate grounds, and finally according to distance from the school.

If the admission of the top two categories can be satisfied, but there are insufficient places for all out-area siblings, priorities will be decided first by reference to special reasons, then according to distance.

In the case where the distance is not a final deciding factor i.e. two applications are at exactly the same distance then the final tie breaker will be a lottery undertaken by an individual independent of the Children's Services Directorate.

** Living within the defined catchment area is defined as "a child residing with his/her parent(s) or carer(s) at his/her normal and genuine place of residence for the majority of the time".

*** A sibling connection refers to a brother or sister, half brother or sister, adopted brother or sister, step brother or sister, or a child of the parents/carer's partner, and in every case the child should be living in the same family unit at the same address.

**** Distance will be measured by the shortest available walking route using a road and/or made up footpath from the front door of the child's address (including flats) to the main entrance of the school, using the Local Authority's computerized measuring system, with those living closer to the school receiving the higher priority.

Multiple Birth Policy

If, when places are offered under the Co-ordinated Schemes only one child from a multiple birth family can be admitted (one of a twin or triplets for instance) then subject to clause 3.24 of the School Admission Appeals Code ("unreasonable" test) places will be offered at the same school to the other children from the same multiple birth.

HIGH SCHOOL ALLOCATIONS

4.2 How will the decisions be made about parents' 3 preferences for high schools?

STAGE 1 All the applications received by the closing date of 31st October 2011 from parents will be analysed together, along with any late applications for which there are good reasons. The applications for the 10 community high schools will be considered against the 6 priorities explained in paragraph 6.1. The Governors of The Bishop of Hereford Bluecoat and St Mary's R.C. High Schools The Hereford Academy and Wigmore High Schools will make their decisions based on the published admission criteria defined in Appendix 4. At this stage, all 3 preferences are treated as a 1st preference, i.e. the priority order shown by parents will not count at this point.

STAGE 2 Following analysis, lists will be drawn up of children whose parents have applied (whether as 1st, 2nd or 3rd preference) for each school. List will be drawn up as according to criteria in 4.1

STAGE 3 Each parent will then be offered a place at the highest of their 3 preferences (if any) that is available after all higher priority applicants have been allocated places. At this stage, applications for Community, Voluntary Aided schools and schools in other Local Authority areas will be considered together.

STAGE 4 It is possible that some parents will not be offered a place at any of their 3 preferred schools. That could happen only in the case of parents who have applied for 3 oversubscribed schools and have not included their catchment area school as one of the 3 preferences, or parents who have submitted a late application without good reason. In such circumstances, the parents will be offered a place at the nearest or most accessible school that still has places available, taking account of any information the parents may already have provided.

4.3 When, and by whom, will the offers to parents be made?

Offers will be made on the same day for all parents who have applied in time. The day will be –

1st March 2012

All offers will be announced by Herefordshire Council, including Herefordshire voluntary aided schools. **Please note that only one school will be offered on the 1st March 2011, which will be the highest ranked with spaces available that you have defined on your application form.**

4.4 Is There A Waiting List For High Schools That Have Too Many Applicants?

The position of waiting lists for high school is complex because of the co-ordinating scheme, which will allow parents to express 3 preferences by 31st October 2011.

If parents are not able to receive their first, second or third preference, the child will be placed on the waiting list after the **1st March 2012**. The rank order of each child's place on the waiting list will be determined using the oversubscription criteria. If vacancies occur after that date the Pupil Admissions Office will make offers, including in the case of voluntary aided schools, foundation and Academy.

Any subsequent successful appeals for the school in question will mean that no place can

be offered to a child from the waiting list until the total number of children due to start in September is reduced to one below the Published Admission Number (e.g. PAN of 180 plus three successful appeals means no further places offered until total reduces to 179 by four sets of parents no longer requiring a place for their child).

The waiting list will be kept open until the end of the Autumn term of the 2012-2013 school year. It is possible that vacancies may occur and places offered at this late stage but the lists will be closed down after this period. If your child has still not received a place at one of your preferred schools, the Local Authority would expect that your child should be enrolled at the school offered by the Council, an independent school, or be educated otherwise.

4.5 Can You Appeal If Your Request Is Unsuccessful?

Community High Schools

If parents submit 3 preferences by 31st October 2011 and include their local catchment school, it is highly likely that an offer for one of the preferences will be made on 1st March 2012. However, if the 1st or 2nd parental preference cannot be met, you may, if you wish, appeal against the decision. Appeals by parents, setting out the grounds upon which the appeal is made for a named school, should be submitted in writing, using the form sent to all unsuccessful applicants, to the Children & Young People's Directorate **within three weeks of the date of notification of the refusal of a place**. All appeals are heard by an independent appeals panel which holds most of its meetings between April and July, though meetings are arranged at any time of year, when necessary. Separate hearings are held for each school. Further information about the appeals procedure is available from the Pupil Admissions Office or from the County Secretary and Solicitor, The Herefordshire Council, PO Box 185, Hereford HR4 9ZR.

If your preference of school was in a different authority and you were not offered this school you will need to contact that authority regarding the waiting list and appeals procedure.

Voluntary Aided High Schools

As previously stated, offers of all places for high schools, including voluntary aided schools will be made by the Council on 1st March 2012. However, separate appeals procedures and arrangements exist to consider decisions by voluntary aided schools. The arrangements are published by the governors of the relevant schools and should be obtained from them direct.

Academy Schools and Foundation Schools

As previously stated, offers of all places for high schools, including academy schools will be made by the Council on 1st March 2012. However, separate appeals procedures and arrangements exist to consider decisions by academy and foundation schools. The arrangements are published by the governors of the relevant schools and should be obtained from them direct.

ALLOCATION OF SECONDARY PLACES OUTSIDE NORMAL ADMISSIONS ROUND

4.6 Can a child transfer to another school at any age other than the normal transfer age?

If parents wish to transfer their child to the same age group in another school, parents should discuss the transfer with the Headteacher of the pupil's present school in the first instance. If it is then decided to make a formal request for transfer, parents should complete an **In year transfer form** from the Pupil Admissions Office. Parents should be aware that any information provided on the application form will be crosschecked and any fraudulent or misleading statement will result in the school place being refused.

Procedure for In Year Transfers

The current School Admissions Code sets out the following:

“From the 2010-2011 academic year, local authorities must formulate schemes for co-ordinating applications made during the academic year and applications for admissions to age groups other than the normal year of entry (“in year applications”)

The Code then goes on in section 3.5 to state: “They (LA's) must formulate schemes for the 2010-2011 academic year by 1st January 2010. Such schemes must comply with the requirements set out in paragraphs 3.6 to 3.18 below.”

These sections are provided in full in section C below and set out the general duties and the expectations of an In Year Transfer process. Please note that amongst these expectations a common application form must be submitted and there are further details on the consideration and processing of this in section 3.15.

B. Rationale of the new requirements

The intent behind the new responsibility is to significantly improve the experience of parents and children transferring from one school to another, with two main aims:

- To improve fairness – stopping unlawful/covert selection by some schools
- To improve the application/offer process for parents and children

C. Co-ordination of admissions from 2011-2012 onwards

3.6 For admissions to schools in the academic year 2011-2012 onwards, local authorities must formulate schemes for co-ordinating all applications to maintained schools and Academies from parents in their area, whenever received, and for whichever age group, under one scheme.

3.7 The following paragraphs reflect the law as it applies to in-year applications for 2010 onwards, and to all applications for admission in 2011 onwards. While it is for each local authority to decide the scheme that best suits its residents and its schools, they must ensure that they:

a) comply with law and regulations including all the procedural requirements (for example, the scheme must require a common application form to be completed, allowing at least 3 preferences, the scheme must provide for information sharing with other local authorities, and it must ensure, so far as is reasonably practicable, that the local authority sends out not more than one offer to all parents seeking places at its schools); and

b) do not disadvantage families resident in other local authorities who apply for schools in their area (which would be contrary to rule established by the Greenwich Judgement)

3.8 Co-ordination schemes do not effect the rights and duties of the governing body of voluntary aided and foundation schools to set and apply their own admissions arrangements and oversubscription criteria nor for Academies to agree their own arrangements with the Secretary of State. Admission authorities do not have to determine the same or similar oversubscription criteria, but must ensure that their own admissions arrangement are compatible with, and do not undermine, the co-ordination scheme for their area. A summary of how the co-ordinated scheme works must be included in the local authorities composite prospectus

3.9 Academies are required by their funding agreements to participate in co-ordination schemes and local authorities must consult them, as well as other admission authorities, when required, in order to agree the scheme. Local authorities must also invite City Technology Colleges to participate in the scheme.

Formulation and adoption of co-ordination schemes

3.11 All local authorities must have a scheme in place each year for co-ordinating admission arrangements for all maintained schools and Academies within their area. Local authorities must formulate schemes by 1 January in the determination year. If the local authority decides to continue to use the scheme from the previous year, this will fulfil the legal requirement to formulate a scheme. Local authorities must consult the Admission Forum every year, and admission authorities for schools affected by the scheme (including Academies) and other local authorities every three years as a minimum. If the Admission Forum advises that the scheme has changed substantially since the previous year, the local authority must consult school governing bodies and other local authorities on it, even if that is less than three years since the last consultation.

3.12 From the academic year 2010-11 onwards local authorities must coordinate all “in-year applications”. In relation to academic year 2010-11 only, the arrangements for coordinating these applications must be formulated by 1 January 2010. They must then consult the bodies mentioned in paragraph 3.11.

Schemes imposed by the Secretary of State

3.13 If a local authority does not notify the Secretary of State by 15 April in the determination year that a scheme has been adopted for the following academic year, the Secretary of State may impose a scheme; or where an imposed scheme was in place for the previous year, he may notify the local authority that the scheme will continue for a further year.

3.14 Where the Secretary of State has imposed and not revoked it a local authority and its schools may decide to adopt the scheme in a subsequently year. In this case, the duty to formulate is met. If the local authority subsequently adopts a scheme agreed with other admission authorities, in accordance with the Co-ordination Regulations, they must notify the Secretary of State so that the imposed scheme can be revoked. Where a scheme from a previous year is being adopted, or has been imposed in relation to the previous year (and all admissions authorities have agreed to adopt it for a further year), confirmation must be sent to the Secretary of State by 15th April each year. It will not be

Main obligations imposed by the Co –ordination Regulations

3.15 The Co-ordination Regulations prescribe national closing dates for primary applications and, in the case of primary applications, prescribe the date by which the exchange of information described in sub-paragraphs b) and c) below must be completed. Local authorities must include these dates in their co-ordination schemes. Aside from this, the main requirements of the Co-ordination Regulations with regard to schemes are:

a) A common application form must be completed, which allows parents to express at least 3 preferences in rank order of preference, which may be for schools within or outside their home local authority area, and to give reasons for their preferences. The common application form must allow parents to provide their name, their address (including documentary evidence in support), and the name, address and date of birth of the child.

b) Local authorities and admission authorities in the area must exchange information on applications made and potential offers by the dates specified in the scheme.

c) The home authority must pass information on the application to other local (maintaining) authorities about applications to their schools in their area. The maintaining authority must determine the application in the normal way, and inform the home local authority if a place is available, by the dates specified in the scheme. The maintaining authority must not tell parents the offer.

d) Where a place is available for a child at more than one school, the home local authority must ensure, so far as is reasonably practicable, that the parent is offered a place at whichever of these schools highest preference.

e) For applications made in the course of a normal admission round, offers of secondary places must be sent by the home authority on 1 March, and offers of primary places on a date specified by the local authority (or the next working day if either date is not a working day) in the year during which a child will be admitted to school.

f) Offers of primary and secondary places must be sent by the home local authority. Schools must not contact parents about the outcome of their applications until after these offers have been received. Only the home local authority can make an official offer.

g) Parents who cannot be offered one of their preferred schools must, if there are places available, be offered a place at another school.

3.16 Where admission authorities normally admit children to primary school at two or three points in the academic year, they should make all offers at the same time. Places allocated to children whose parents have deferred their entry until later in the same academic year cannot be offered to another child, unless the parent withdraws acceptance of the place.

Applications to schools with a different age transfer

The Education (Middle Schools) (England) Regulations 2002 define ‘middle schools’ and whether they are classified as primary or secondary schools which depends on the age range of the pupils. For the purposes of co-ordination, middle schools with entry age before 11 are to be treated in the same way as primary schools; upper schools (with an entry age after 11) are to be treated as secondary schools.

3.18 For Middle deemed secondary schools (not applicable for Herefordshire), the home local authority must make an application form available to any parent in the area who wishes to apply for a school within the neighbouring area which operates a different age transfer. The home local authority must accept applications in the same way it would for its own admissions round. It must, if preferred schools are in another area pass forms to neighbouring authorities, or must apply their co-ordinated scheme. The maintaining local authority must inform the home authority if a place is to be offered in one of its schools. The home local authority must inform the parent of the outcome of the application

D. Current practice in Herefordshire

For a number of years Herefordshire has been running a voluntary scheme where we centrally (within the Admissions & Transport teams) process in year transfer requests generated by parents for most of the community schools but not for any of the VA schools.

We estimate that we currently process about 70% of all in year transfer requests generated for all the maintained schools in Herefordshire. The new overarching responsibility will lead to the need to deal with 100% of all transfer requests.

E. Links to the In Year Fair Access

There is a direct interface between any In Year Transfer scheme and the “In Year Fair Access” protocol. The “In Year Fair Access protocol” is designed to handle, in a professional way, all In Year Transfers that are not straight forward. This will include children who have been permanently excluded, children attending PRU’s integrating back into mainstream, education , traveller children, children with SEN (but without statements), children who display behavioural difficulties, “serial” movers (children who have been transferred at least twice before without an address change reason) etc.

F. In Year Transfer summary of procedure

- Parent / Carer - visits requested school
- Parent / Carer - request form from the School Admissions Team – School Admissions Team issues In Year Application Form on the same day
- Parent and current school - complete application form
- Parent / Carer - returns application to School Admissions Team within 5 school days
- School Admissions Team assesses the application form.
- School Admissions Team informs parent / carer of the outcome within 10 school days from the date the parent / carer first requested the application, provided that the parent / carer returned the form within the 5 school days, if a straight forward application.

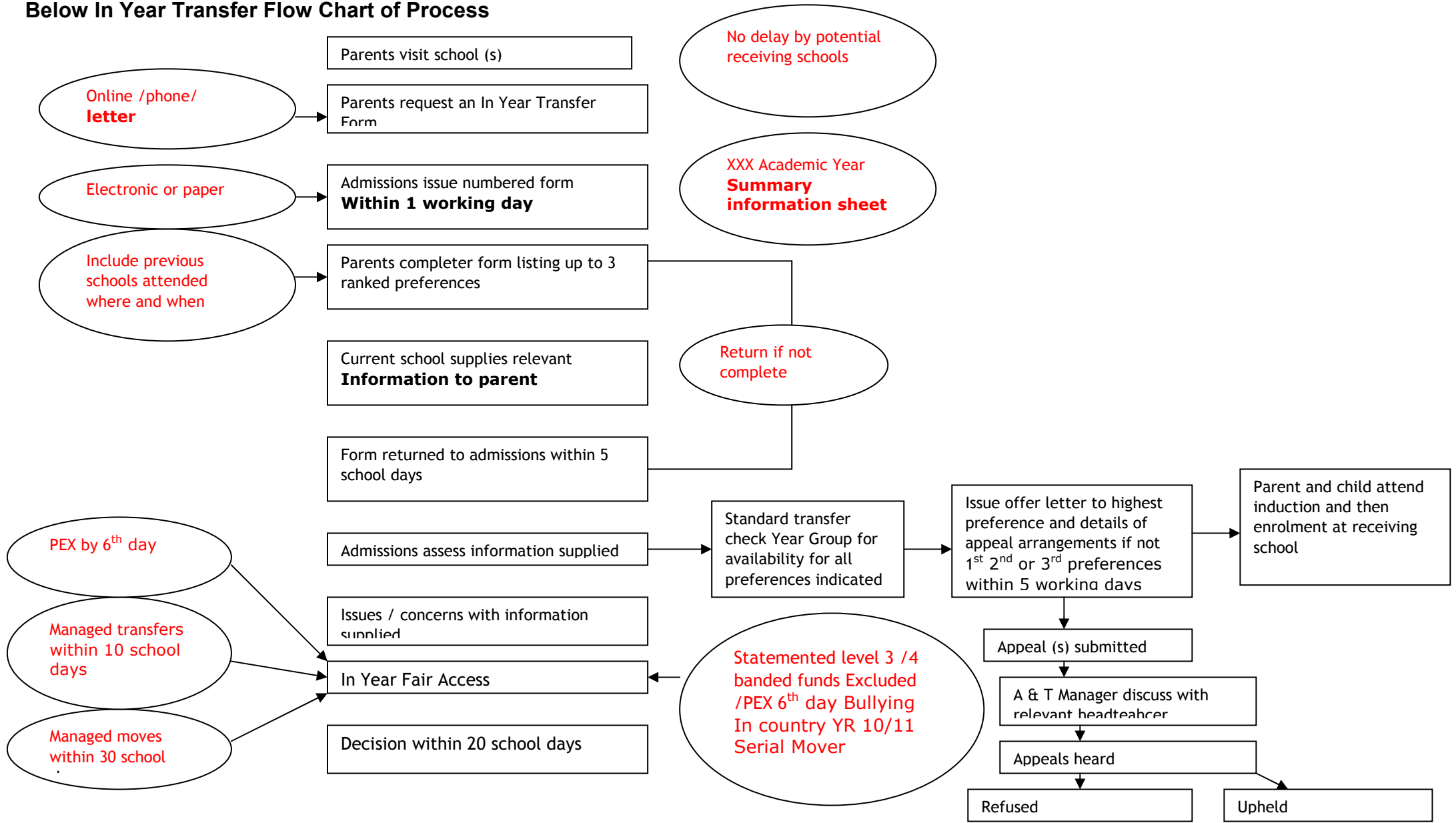
Apply on line for a place at a Secondary school for September 2012 at www.herefordshire.gov.uk

The In Year Transfer scheme will impact upon all maintained schools within Herefordshire and subsequently upon any parent (from within and outside Herefordshire) seeking an in year transfer into these school. All applications will be dealt with in a consistent and fair manner. Admissions Code , and a flow diagram indicating the way in which applications will be dealt with.

If it is not a straight forward application, the Admissions Team will forward details to the In Year Fair Access Panel to consider and make a decision within the 20 days and inform the parent / carer of the outcome (See Appendix 8 for the In Year Fair Access)

As noted at the start of this, the underlying intention of the new requirements in the additional School Admissions Code is that fairness and the experience of parents and children improved by the requirement for all maintained schools to be covered by this procedure.

Below In Year Transfer Flow Chart of Process



4.7 Can a child be allocated a school place following permanent exclusion?

If a child has been excluded from two separate schools it is unlikely that another primary or high school will be provided. The Council will arrange alternative provision through the Medical and Behavioural Support Service.

However, where possible the authority will try to place a pupil at a suitable alternative school at a reasonable distance from the home address. Currently, the Council has a rota system working with the high schools in order to ensure a fair distribution of pupils. In certain cases, the Council may direct the Governors to accept a pupil even though this may take the year group above the agreed PAN.

Pupil Referral Units

These centres cater for students whose needs cannot be met in mainstream schools. They are not accessed through parental preference but through the professional judgement, based on published criteria, of managers and officers in the Children and Young People's Directorate.

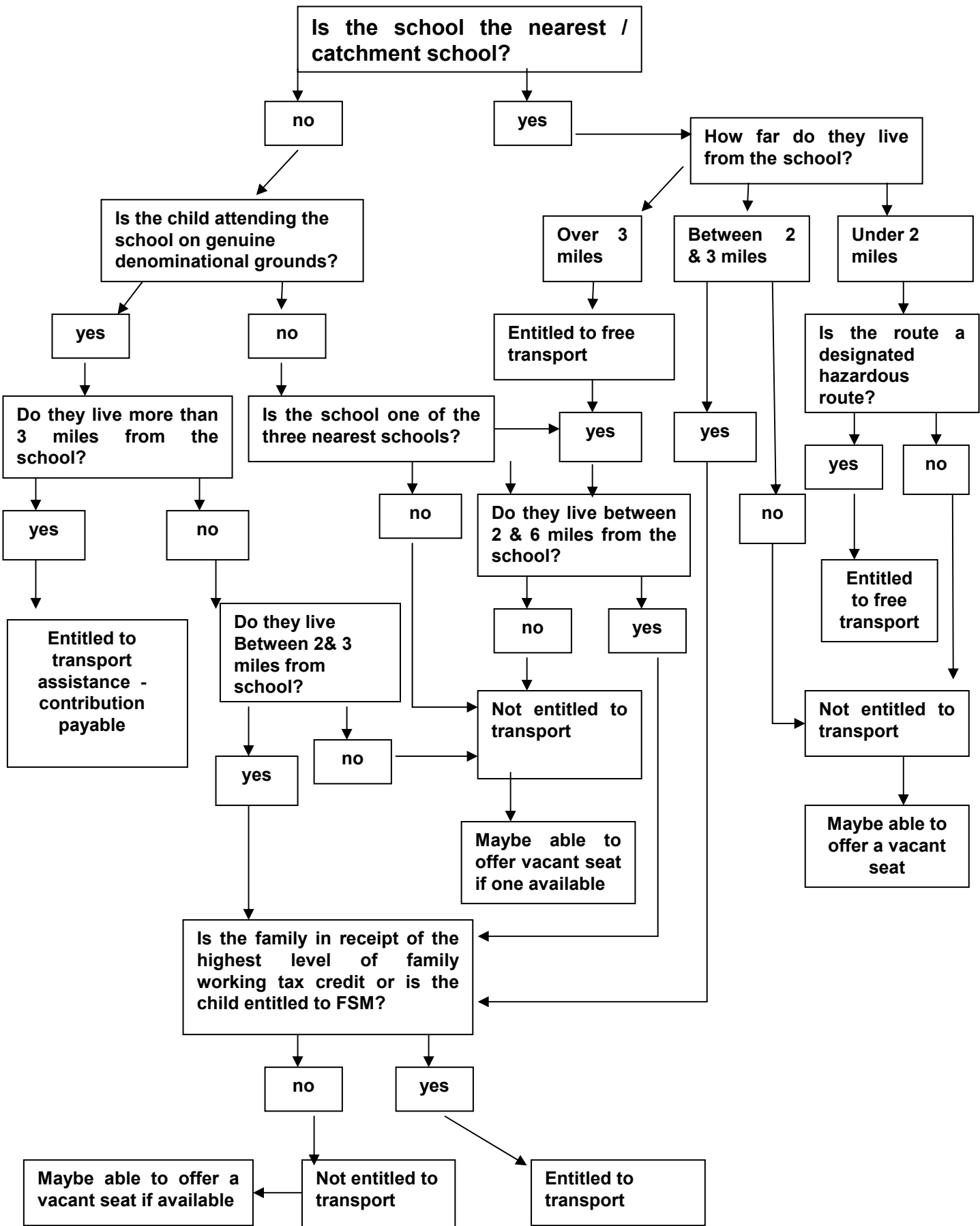
- St David's Centre Hereford (KS4 14-16) 01432 274485
- The Aconbury Centre Hereford (KS3 11-14) 01432 341096
- The Priory Centre Leominster (KS4 14-16) 01568 610733

High School Transport

Herefordshire Council have a statutory duty to provide home to school transport for High School pupils living within the County who meet one of the following criteria:

- Is attending the nearest/catchment school and lives over 3 miles from the school.
- Is attending the nearest/catchment school, living less than 3 miles from the school on a route that has been designated as hazardous.
- Is attending the school on genuine denominational grounds and lives over 3 miles from the school (contribution payable).
- Is attending the school on genuine denominational grounds, lives between 2 and 3 miles from the school and the family is in receipt of the **highest level of family working tax credit** or the child is in receipt of **free school meals**. Evidence of low income will be required.
- Is attending one of the three nearest schools, living between 2 and 6 miles from the school and the family is in receipt of the **highest level of family working tax credit** or the child is in receipt of **free school meals**. Evidence of low income will be required.

Do you qualify for Transport? High School



What is the statutory walking distance?

For High school age pupils, walking distance is defined in law as up to 3 miles. It is always assumed that a child will be accompanied as necessary. The distance is measured by the shortest available walking route along a road or made up footpath, as measured from the nearest pedestrian access to the school site to the nearest entrance to the external boundary of the pupil's home address.

How is the distance measured?

To ensure consistency, the distance between the home and the school is calculated by a computer based mapping system using the shortest available walking route along a road or made up footpath from the nearest pedestrian access to the school site to the nearest entrance to the external boundary of the pupil's home address.

How far will I need to walk to the nearest boarding point?

In general, children, accompanied by their parents where appropriate, may be required to walk up to one mile to or from a designated boarding or alighting point. (In the case of denominational transport the distance to the boarding could be further than one mile). However, in certain circumstances the cost of redesignating a new boarding point may not be economic or cost effective and therefore parents may be expected to take their child up to the limit of the statutory walking distances.

What happens if there is a disagreement about the walking distance?

If you believe that the distance has been measured inaccurately, please contact the Transport and Admissions Officer on 01432 260931 and the distance will be manually reassessed, using a computer based mapping system and measuring the distance by hand.

The route I need to take to school is too dangerous to walk, am I entitled to transport?

The measured distance (see 'How is the distance measured?') to school must be one along which a child, accompanied as necessary, can walk with reasonable safety to school. If a parent believes that the route to the catchment or nearest school is not safe, they can ask us to assess it on the grounds of exceptional hazard. (see: How do I apply for the route to be assessed?)

If part of the route is assessed as containing exceptional hazards, it will not be included in the statutory walking distance measurement. If the alternative shortest route, avoiding the hazardous part of the route, is over the statutory walking distance, transport assistance will be provided.

Several routes have already been assessed as containing exceptional hazards so it is always worth checking if yours is one of them by calling the Transport & Admissions Officer on 01432 260931.

We are on a low income, is my child still entitled to free transport assistance?

From September 2008, children who are between the ages of 11 and 16 and attending High School from low income families (those families whose children are entitled to free school meals, or who are in receipt of the maximum level of Working Tax Credit) are eligible for free transport to one of their three nearest qualifying schools where they live more than two miles, but less than six miles from that school. If you would qualify for this assistance we will write to tell you once we have assessed your application for transport (See How do I apply for transport) You will need to supply evidence of your Working Tax Credit or inform us that your child is in receipt of free school meals. (To check if your child would qualify for Free School Meals please call 01432 260268). We will return to you any evidence you submit.

My child is attending the nearest denominational school, can he have transport assistance?

Herefordshire Council will provide assistance with transport where a child attends, on **denominational grounds (either at the time of their original admission or at some subsequent point in time)**, the nearest appropriate or designated voluntary aided church school, **and** it is beyond statutory walking distance from the home address.

Parents are asked to pay a contribution towards the cost of providing such transport subject to the following criteria:

1. Parents to pay contributions towards the cost of transport for the first two children attending any denominational school from any one family (at the same address) with any subsequent children having a denominational place entitled to free transport, so long as those other children remain in receipt of transport under this scheme.
2. Free transport for those children entitled to free school meals (Entitlement can be checked by contacting the Free School Meals team on 01432 260921), families in receipt of free prescriptions (on income related criteria) or in receipt of full housing or Council Tax benefit.
3. A contribution of 50% of the set contribution rate per term for those not entitled under 2 above but whose parent(s) are entitled to Housing or Council tax benefit.

A child is deemed to attend a local Church School on denominational grounds where the denomination of the parents is the same as the denomination of the school and the child is offered a denominational place.

As in the case of transport to community schools, statutory walking distance is up to 3 miles for high school children.

The Children's Services Cabinet member set the level of parental contribution in January 2010. For budgetary purposes the charge is linked to the level of contribution paid by parents utilising the Vacant Seat Payments Scheme, which for the 2010/2011 school year is £135 per term.

For information the list of Voluntary Aided Church Schools is as follows;

Roman Catholic

St Mary's R.C. High School Lugwardine

Church of England

The Bishop of Hereford's Bluecoat High School Hereford

Will transport assistance be given to a school other than one provided for their home

address?

Assistance with transport is normally given only to pupils attending the school(s) provided for their home address. Parents are responsible for transport when their child attends, by parental preference, an alternative school. However, some exceptions may be made in the following circumstances:

- (i) if the catchment or nearest school is full and your child is not awarded a place in that school, the Local Authority will redesignated an alternative school for your child. If that school is situated beyond the defined walking distance, transport assistance will be provided.
- (ii) a pupil with problems associated with special education needs for whom attendance at a particular school is considered to be appropriate and the school is situated beyond the defined walking distance, or if walking is too difficult for the pupil.

Is transport available to two different home addresses?

No, transport assistance is only provided to the main home address. It is not available from a second address or to child care facilities. Where parents live apart the child's main home is defined as the one being where they live most of the time and that parent receives the Child Benefit. However, it maybe possible to purchase a seat for the second address under the Vacant Seat Payment Scheme (VSPS) [See](#) below.

I do not qualify for free transport, is their any other help available?

For pupils who are not entitled to free transport, Herefordshire Council operate a Vacant Seat Payment Scheme, when spare seats are sold at either the current standard rate for each child (£135 per term in 2010/2011) or at the lesser rate for each child (£45 per term in 2010/2011) who is in receipt of free school meals. There is no guarantee that a seat will be available at the start of the following term, or continued throughout a term. In the event of more applicants than vacant seats being available, the allocation of places will be on the basis of distance to the provided or nearest school: the nearest to the school being awarded the seat first.

It is also important to note that the Council is reviewing all routes now that pupil numbers are falling and there are likely to be an increasing number of situations in which routes will be combined or simplified, and this may mean that vacant seats will reduce in number.

If I move home whilst my child is engaged on an examination course will I continue to receive free transport?

Each year, some Year 10/11 pupils and Year 12/13 students engaged in examination courses move home address into another part of the County (i.e. into the catchment area of a different school). In such situations, which arise from decisions taken by parents, the normal expectation is that parents will take responsibility for getting their son/daughter to the school (including under the vacant seats payment scheme, if available) at which the pupil is enrolled, or make arrangements for the pupil to transfer to another school. Only in exceptional family circumstances, would free transport assistance be offered, on an individual basis. Even in such situations, transport assistance would normally be allowed only where provision could be made within an existing Home to School Transport route, with the parent being responsible for taking the pupil to and from the relevant boarding point.

Will transport be provided for medical reasons?

The Council may provide free transport for medical reasons, if necessary, on the recommendation of the Senior Clinical Medical Officer.

Will transport be provided to and from Independent Schools?

No travel assistance will be given to pupils attending Independent schools.

What happens if a pupil is disruptive on the provided transport?

Parents must appreciate that the authority will not tolerate anti-social behaviour on its home to school transport. The authority has issued various sanctions to deal with these situations, which in the most serious of cases could result in the pupil being banned from all school transport. In these situations the parents will become responsible for transporting the child to school.

What types of transport assistance are available?

The Director of Children Services decides on the most suitable transport arrangements, bearing in mind all relevant factors, including cost.

Depending on individual circumstances, transport is arranged usually by contract bus, service bus or rail, though sometimes other individual arrangements have to be made. Transport is provided at the beginning and end of the normal school day, but is not provided for out of hour's activities.

How do I apply for transport?

If you believe you qualify for free transport or if you wish to apply for a seat under the Vacant seat Payment Scheme you will need to submit a 'Travel Assistance Form' (Form T) which is available from the website www.herefordshire.gov.uk or by calling the Transport & Admissions Officer on 01432 260931. Once complete, these forms should be sent to:

The Transport & Admissions Officer, Admissions & Transport, PO Box 185, Hereford, HR4 9ZR.

I have been refused assistance with transport but believe that my circumstances are exceptional and wish to appeal against the decision, how do I do this?

You can appeal against any decision made by a member of the School Transport team by writing, explaining your reasons/circumstances to:

Mr Rob Reid, Head of Access & Capital Planning, PO Box 185, Hereford HR4 9ZR

How do I apply for transport on the grounds of Exceptional Hazard?

If your child has not been awarded free transport on the grounds that you live less than the statutory walking distance from the catchment or nearest school, but believe that the route you need to take is not safe to walk with your child, you can apply for the route to be assessed by completing the form 'Application for Free Transport on Exceptional Hazard Grounds' which is available on the website www.herefordshire.gov.uk or by calling the Transport & Admissions Officer on 01432 260931.

How can I contact the Transport Office?

Email – schooltransport@herefordshire.gov.uk

Name		
Mr Andrew Blackman	Admissions & Transport Manager	01432 260927
Mrs Jackie O'Connor	Transport Co - Ordinator	01432 260931
Mrs Helen Downen	Transport Officer SEN, PRU & P16	01432 383544
Mr David Baldwin	Transport Operations Officer	01432 260937
Ms Sarah Innes	Transport Operations Officer	01432 261523
Mrs Gill Bradbury	Transport Assistant	01432 260924
Mr Andrew Gwilt	Transport Assistant	01432 260928

6: POST 16 TRANSPORT

In accordance with the requirements of the Education Act 2002, Herefordshire Council has set up a Post 16 Transport Partnership which include the colleges, public transport and representatives from the schools with sixth forms and the Connexion Service.

This Transport Partnership has defined a number of policies, which are listed below, and full details can be found in Appendix 7. In addition the Partnership has defined a standard charge of £135 for all students per term; there will be no reduced rate for those students in receipt of or eligible for Education Maintenance Allowance.

- **Policy One** - concerns students living in Herefordshire and attending Post-16 provision within the County (and the provided places at Ludlow);
- **Policy Two** - deals with students resident out of county who seek a place within the County;
- **Policy Three** - concerns Herefordshire students seeking Post-16 provision elsewhere or training out of County;
- **Policy Four** - relates to overseas Post-16 students.

6.1 *What education opportunities are there after the age of 16?*

There are four high schools with Sixth Forms offering 'A' level study in Herefordshire. The schools with Sixth Forms are Kington, Ledbury, Leominster and Ross on Wye. There is also a Sixth Form College of Further Education and a College of Arts in the City of Hereford offering a wide range of 'A' level and vocational study and specialist arts courses.

Discretionary Support Funds are available in colleges and school sixth forms to help with learning costs. The funds are prioritised for those who face financial hardship. They can help with the expenditure such as equipment, materials and visits. Applications for this fund should be made through the relevant Sixth Form College. The grants are means tested. You may be expected to provide proof of income or expenditure when you apply. For more information please visit the following website:

http://www.direct.gov.uk/en/EducationalAndLearning/AdultLearningFinancialHelpForAdultLearners/DG_10033131

All enquiries for admissions to School Sixth Forms or Colleges should be made directly to the school or college. The admissions policies of School Sixth Form together with their Pupils Admissions Number can be found in Appendix 5.

Foundation Learning

The Foundation Learning programme aims to help those young people who are not ready at the age of 16 to go into an apprenticeship, further education or employment by helping them to prepare for entry into employment or learning. Foundation Learning develops learners' motivation, confidence and personnel effectiveness. They work towards qualifications in basic and/or * Functional Skills acquiring vocational knowledge, skills and understanding through sampling a range of work and learning contexts. All young people involved in Foundation Learning work towards some qualification, it is not time bound but based on the needs of each individual learner.

There is a new 16-19 Bursary Scheme available to support some groups of young people to continue in full time education which comes into effect from September 2011. The final details of this scheme are due to be released shortly. For further information : www.education.gov.uk

The Education Maintenance Allowance (EMA) is no longer available.

*Functional Skills are practical skills in English, Mathematics and ICT which will allow individuals to work confidently , effectively and independently in life.

In Herefordshire the following providers deliver Foundation Learning provisions (E2E):
Community Service Volunteers (CSV), Herefordshire Primary Care Trust AND Connexions
Worcestershire.

To find out more about Foundation Learning and how to apply, contact your local Connexions office and ask for details.

Connexions

6 St Peters Street Hereford HR1 2LE

01432 269404

Hhtt://www.myherefordshire.com/youthzone2011/

Apprenticeships

Apprenticeships enable young people to combine work and study to gain qualifications, while they are earning. They can choose from a wide range of apprenticeships in Herefordshire covering many different occupations. All apprenticeships include key basic elements including an opportunity to study to gain nationally recognised qualifications including a National Vocational Qualification (NVQ) at Level 2 or Level 3, a chance to develop *Functional Skills and the opportunity to gain a technical certificate such as BTEC or City & Guilds Progression Award. Apprentices are employed and paid a wage.

(They will be fully covered by the National Minimum Wage from October 2010)

Apprenticeships are offered by a wide range of providers across the county along with the opportunities offered by training providers from further afield, including:

- Herefordshire College of Technology (Business Administration, Construction, Hairdressing, Mechanics, Retail) including Holme Lacy College (Agriculture & Horticulture, Animal Care)
- Herefordshire Group Training Association (Business Administration, Engineering, Manufacturing)
- Herefordshire Primary Care Trust (Business Administration, Care)
- Keith St Peter Academy (Hair, Beauty)
- PGL (Active Learning & Leisure and Hospitality)
- Riverside Training (Business Administration, Hospitality and Retail)

*Functional Skills are practical skills in English and Mathematics and ICT which allow individuals to work confidently, effectively and independently in life. They will be available as part of an apprenticeship from September 2010

replacing key skills

To find out more about Apprenticeships and how to apply go to the Apprenticeship website, and or contact your local Connexions office and ask for details. (see below)

Connexions
6 St Peters Square
Hereford HR1 2LE

01432 269404
<http://www.myherefordshire.com/youthzone2011/>

Other useful websites

youthZone <http://www.myherefordshire.com/youthzone2011/>

Apprenticeships <http://www.apprenticeships.org.uk>

6.2 What are the normal associated feeder areas for Sixth Form provision?

Catchment areas served by 11-16 age range High School	Designated Post-16 Establishment
All Hereford City High Schools Bromyard, Queen Elizabeth High Kingstone High Peterchurch, Fairfield High	Hereford VI Form College or Herefordshire College of Technology Holme Lacy College or Herefordshire College of Arts
Weobley High Wigmore High	Kington, Lady Hawkins (see footnote*) Ludlow College of FE (see footnote*)
Catchment areas served by 11-16 age range High School	Pupils served
Kington, Lady Hawkins Ledbury, John Masefield Leominster, The Minster Ross-on-Wye, John Kyrle	All pupils living in the relevant school Catchment area including pupils who attended an 11-16 high school

***Footnote: Some civil parish areas within Weobley and Wigmore relate to the Sixth form at the Minster College, Leominster - see Appendix 6 for details.**

6.3 Colleges of Further Education, Hereford Sixth Form College and School-based Sixth Forms

Colleges	Address	Tel:
Hereford Sixth Form College	Folly Lane, Hereford HR1 1LS	01432 355166
Herefordshire College of Arts	Folly Lane, Hereford HR1 1LT	01432 273359
Herefordshire College of Technology	Folly Lane, Hereford HR1 1LS	01432 352235
Holme Lacy College	Holme Lacy, Hereford HR2 6LL	01432 870316
Ludlow College of FE	Mill Street, Ludlow, Shropshire SY8 1BE	015484 872846

School-based Sixth Forms:

Lady Hawkins' High School	Church Road, Kington, Herefordshire HR5 3AG	01544 230441
The John Masefield High School	Mabel's Furlong, Ledbury, Herefordshire HR8 2HF	01531 631012
The Minster College	South Street, Leominster, Herefordshire HR6 8JJ	01568 613221
The John Kyrle High School	Ledbury Road, Ross-on-Wye, Herefordshire HR9 7ET	01989 764358
The Hereford Academy	Stanberrow Road Hereford HR2 7NG	01432 355213
Hereford Steiner Academy	Much Dewchurch Hereford HR2 8DL	01981 540221

Apprenticeship Providers		
Hereford College of Technology	http://www.hct.ac.uk/Courses/mod.html	
Herefordshire Group Training Associations	http://www.hgta.org/	01432 274310 info@hgta.org
Herefordshire Primary Care Trust	http://www.herefordshire.nhs.uk/705.aspx	
Keith St Peters Academy		01432 263516
PGL Travel	http://www.pgl.co.uk/PglWeb/Recruitment/Training-and-development/default	0844 371 0101
Riverside Training LTD	http://www.riverside-training.co.uk/funded-apprenticeship.html	01432 359244
Apprenticeships Website	http://www.apprenticeships.org.uk	

7: NATIONAL CURRICULUM AND ASSESSMENT ARRANGEMENTS

The Education Reform Act (1988) introduced a National Curriculum for all pupils aged 11-16 years in all publicly funded schools, including special schools. The main aims of the National Curriculum are to provide pupils with a broad and balanced curriculum, which promotes their spiritual, moral, cultural, social, mental and physical development. The following information explains the position for the school year 2009-2010.

7.1 What must pupils aged 11-14 study?

Pupils in Key Stage 3 (KS3, ages 11-14) must study English, mathematics, science, careers education, citizenship, design and technology (D&T), information and communication technology (ICT), history, geography, art and design, a modern foreign language, music, physical education (PE), religious education (RE) and sex education.

Although it is not statutory most schools provide lessons in personal, social and health education.

7.2 What must pupils aged 14-16 study?

All pupils at Key Stage 4 (KS4, ages 14-16) must study English, mathematics, science, careers education, citizenship, enterprise, information and communication technology (ICT), physical education (PE), religious education (RE), sex education and work related learning.

7.3 What about pupils with special education needs?

Pupils with special education needs also follow the National Curriculum so that they have similar education opportunities. However, in particular circumstances, parts of the National Curriculum can be withdrawn for short periods of time. This is known as 'disapplication'. (See Chapter 12 of this booklet about Special Education Needs.) Pupils attending Pupil Referral Units follow a broad and balanced curriculum, which includes important aspects of the National Curriculum.

7.4 What else is taught in addition to the National Curriculum?

At KS4, the arts, design and technology, humanities and modern foreign languages must be available for pupils to choose.

Schools are increasingly expanding the number and range of vocational courses that pupils can choose in line with the national strategy to modernise education for the 14-19 age group. Some of these courses may be taught in other educational institutions or by work based learning providers and provide a flexible range of pathways into further and higher education and training.

Many schools provide options for pupils to study other areas of the curriculum besides those laid down by the National Curriculum - for example, business, drama, environmental education, careers, personal, social and health education and economic and industrial understanding.

7.5 Specialist Schools

In schools that are designated and funded as specialist because they are centres of excellence for a certain subject, the government requires enhanced provision and opportunities for pupils in that subject.

7.6 Who makes the decisions about the curriculum in schools?

The content and assessment procedures of the National Curriculum are determined by the Secretary of State for Children, Schools and Families, and are overseen by the Qualifications and Curriculum Authority (Q.C.A.). In all parts of the curriculum, the manner in which the curriculum is taught is a matter for individual schools, taking account of external guidance, which includes the national literacy and numeracy strategies. It is the responsibility of the Governing Body to ensure each school has a curriculum policy, which must include the National Curriculum determined by the Secretary of State for Children, Schools and Families.

7.7 What do you do if you are unhappy about the curriculum your child is studying?

Most problems can be solved by discussing them with your child's teacher and/or headteacher. If a problem cannot be solved in that way, please contact the School Improvement Services at the office of the Children and Young Peoples' Services, P.O. Box 185, Hereford HR4 9ZR, telephone: 01432 260813.

7.8 How is the National Curriculum assessed?

The National Curriculum is organised into Key Stages.

Key Stage 3	for pupils aged 11-14 years
Key Stage 4	for pupils aged 14-16 years

Regular assessment is not new; it lies at the heart of effective teaching and helps in the planning of the next stage of a pupil's learning programme. During each school year, teachers continually assess pupils' work.

National Curriculum statutory assessment takes place at the end of Key Stages 2 and 3 (i.e. for pupils aged 11, and 14). It includes both teacher assessment and externally set tasks/tests in the core subjects of English, mathematics and science as follows:

End of Key Stage 2 * Externally set tests in English, mathematics and science.

For pupils aged 16 years, GCSE continues to be the main examination although a growing number of pupils will gain accreditation in vocational qualifications such as the new, applied GCSE's, National Vocational Qualifications (NVQs), ASDAN life skills courses and entry level qualifications such as Certificates of Achievement (COAs). From September 2009 new specialised Diplomas in vocational subjects may become available.

7.9 Where can you find out more about the curriculum your child will study and how will you be kept informed of progress?

Each schools profile can be found at www.schoolsfinder.direct.gov.uk must include information about what is taught and how the curriculum is arranged. Schools must also provide

information about examinations and vocational qualifications, school results in tests, and teacher assessments at the end of each Key Stage.

Schools must provide a written **annual report** for your child, detailing attendance and progress, with comments on all National Curriculum subjects. At the end of the Key Stage, the report must give your child's National Curriculum assessment results in Mathematics, English and Science and how these compare with the results of pupils of the same age in the school and, where relevant, nationally. The results of any public examinations taken by your child must also be given. Schools must give general information about the attainment of other pupils of the same age, so that you can compare your child's results with those details.

All schools must also make arrangements for parents to discuss their child's progress with appropriate teachers, at least once a year.

7.10 *How can you best help your child?*

- talking to your child about school;
- contacting the school about any concerns or worries you or your child have;
- keeping in touch with teachers who are in the best position to answer questions about what pupils are learning and the progress they are making;
- attending open evenings;
- encouraging your child to do homework the school has set.

Headteachers and teachers are always willing to discuss your child's progress with you, by appointment.

8: CHARGES, SCHOOL MEALS AND ALLOWANCES

8.1 Are any charges made for school activities?

In general, schools may not charge for the education of pupils, but there are some circumstances in which charges may be made, as explained below.

Instrumental Music Tuition

Charging arrangements exist for parents to pay part of the cost, if their children receive instrumental music tuition in a small group (up to and including 4 children) or have individual lessons with one of the County's specialist teachers. The Authority also provide an instrument leasing scheme which is chargeable

Residential Activities

Parents will be required to pay all or part of the cost of accommodation and meals for residential activities organised by the school as part of the curriculum. Transport for curriculum activities is provided free of charge by the school, though schools may ask parents for voluntary contributions.

Swimming

No charge is made to parents for swimming instruction organised by the school, though schools may ask for voluntary contributions towards the cost of pool fees and transport.

Examinations

Fees for public examinations are usually paid by the Council. Entry for approved public examinations is encouraged as long as pupils have a reasonable chance of success. Decisions on such matters are normally left to the professional judgement of the headteacher and staff. Parents might be asked to pay fees if pupils fail to attend an examination for which they have been entered.

Meals

Although the Council does not have a school meals service, many schools have arrangements with private caterers to provide food for sale to pupils. Children who are eligible for free meals receive either a sandwich pack or a contribution towards the cost of a meal available at the school. Free school meals are available only to pupils whose parents are receiving a Department of Social Security Award of Income Support or Job Seeker's Allowance (Income based). Application forms are available from all schools and from the Free Meals Unit, The Herefordshire Council, PO Box 185, Hereford HR4 9ZR or 01432 260268.

9: EDUCATION WELFARE SERVICE AND SCHOOL UNIFORM

Education Welfare Service

The Education Welfare Service (EWS) works within a legal framework and endeavours to provide a caring, supportive and effective service. It ensures that regular attendance at school remains of paramount importance in order that children may benefit from their education. The EWS provide support and advice to schools, children and young people, parents and carers on pupil welfare matters and issues related to attendance at school, particularly issues of irregular school attendance. Each high school (and academy that has opted into EWS) is allocated a designated Education Welfare Officer who works with them and their local primary schools.

The majority of pupils attend school regularly and enjoy it. However, some pupils do have attendance difficulties for many different reasons. Should you experience difficulties (problems) which directly or indirectly affect your child's attendance, a Welfare Officer will be pleased to provide advice and support. The Education Welfare Service has a legal responsibility to monitor school attendance and consider court action against parents whose children do not attend school regularly.

Information about both these services can be obtained from:

Principal Education Welfare Officer,
P.O. Box 185,
Blackfriars
Hereford HR4 9ZR.

Tel: 01432 260861

School Uniform and Appearance Codes

Many Governing Bodies have made a policy to define a 'school uniform' as it can make a considerable contribution towards the school's ethos or image. Schools, in setting their uniform policy, must act reasonably. Recently legal advice has been given indicating that it would be inappropriate for any school to have a policy for uniform, which did not include provision for girls to wear trousers.

The policy on uniform varies between schools and parents should seek information on the policy by reference to the school prospectus. Prospectuses are supplied to parents by the individual school concerned. Any parent wishing to know more about the uniform policies of a particular school should make inquiries at the school.

School Leaving Date

The school leaving date is the last Friday in June for all pupils who will be 16 by 31st August.

10: SPECIAL EDUCATIONAL NEEDS

10.1 What are Special Educational needs?

The terms Special Education Needs (SEN) and disability have legal definitions:

- Children with SEN have learning difficulties or disabilities that make it harder for them to learn than most children of the same age and which calls for special educational provision to be made for them. (SEN Code of Practice 2001)
- Children have a disability if they have a physical or mental impairment that has a substantial and long term effect on their ability to carry out normal day to day activities. (SEN & Disability Act 2001) superceded by Equalities Act?

10.2 What provision is made for children with SEN and Disabilities

All schools and early years' settings use the SEN Code of Practice, to guide their procedures for deciding which children need special help and their arrangements for providing that help. In the majority of cases children will have their needs met in their local mainstream school where school staff, will be able to identify, assess and advise schools on how to provide for children with special or additional needs.

For a small minority of children a Statutory Assessment of their special educational needs may be appropriate and might result in the Local Authority issuing a Statement of SEN. The Local Authority also has a system of Banded Funding that schools can apply for if additional resources are required. The same amount of additional funding is available via a Statement of SEN or Banded Funding.

Some children may need the extra support of a special school. A child must have a statement of SEN to attend a special school and a place is determined following the Council's consideration of statutory advice or statutory annual review of a statement of SEN. **Admission to a special school is not part of the process described in this booklet and you should not name a special school as one of your 3 choices.** The possibility of consideration for a special school place should be discussed as part of the Annual Review process.

There are 3 special schools in Herefordshire able to take secondary children:

- Barrs Court School for children and young people with Severe Learning Difficulties (SLD) or Profound and Multiple Learning Difficulties (PMLD) Age Range 11-19
- Westfield School for children and young people with Severe Learning Difficulties (SLD) or Profound and Multiple Learning Difficulties (PMLD) Age Range 5 -19
- The Brookfield School for children and young people with Behavioural, Emotional and Social Difficulties (BESD) Age Range 5 -16

All schools must consider what the SEN Code of Practice says when they draw up their policies for children with special educational needs and must include within the school's policy the name of the teacher who is responsible for children with special needs (often called the Special Educational Needs Co-ordinator or SENCo) who will be able to talk to you about your child's special educational needs and keep you fully involved if particular support arrangements are to be provided. If you are not sure whether your child has special needs as defined above you should contact the SENCo. If your child has a Statement of SEN you will need to start planning the phase transfer in year 5 through the Annual Review process.

Schools are responsible for arranging these review meetings and involving parents.

If it is not possible to come to an agreement about a child's special needs and or a school placement parents have the right to appeal to the Special Educational Needs and Disability Tribunal (SENDIST). The tribunal is an independent body set up to consider cases where parents and a Local Authority have not been able to reach agreement. However the vast majority of cases are resolved through consultation between the parents, Council Officers and in some cases, Parent Partnership (Tel) 01432 260955. In addition to the local arrangements, there is also an independent service, Midlands SEN Mediation (Tel) 01952 275038

Accessibility

The Inclusion statement in the National Curriculum outlines three principles to support the access and inclusion of young people with a range of additional needs:

Schools should.....

1. set suitable learning challenges
2. respond to pupils' diverse learning needs
3. overcome potential barriers to learning and assessment for individuals and groups of pupils.

The Local Authority has an Accessibility Strategy to support the inclusion of young people in their local school by removing barriers to the accessibility of information, the curriculum and physical environment wherever possible.

We are confident that all mainstream schools in Herefordshire are able with the appropriate support and adaptations to the curriculum to meet the Learning needs of the majority of children in their locality.

With regard to physical accessibility the following High Schools are fully accessible to young people with a physical disability.

- Kingstone High School
- Whitecross High School
- Wigmore High School
- The Bishop of Hereford's Bluecoat School
- John Masefield High School Ledbury
- John Kyrle High School Ross

For those parents negotiating a Key Stage 2-3 phase transfer for young people with a statement the following diagram may be helpful

Year 5 Annual Review

The SENCo for the local High School and a LA Casework Officer will be invited to describe the provision made by the High School and to discuss any particular transition issues with you and the Primary School SENCo. This is an opportunity for you to hear what the provided school has to offer but you may wish to consider other schools that you think may suit your child's needs too and you should explore these options by visiting the schools. (see page 38)



Autumn Term (Year 6)

Complete and submit the common application form (SA1 which you will receive in early September) You can express up to 3 preferences and should include your catchment school if you wish this to be a considered option. **Admission to a special school is not part of the process described in this booklet and you should not name a special school as one of your 3 preferences.**

The closing date is **31st October 2011** (see page 12)



During this time a Casework Officer will work with you and the school to ensure that whenever possible your child goes to your preferred school.

15th February (Year 6)

By the 15th of February a final statement will have been sent to you naming a school



1st March (Year 6)

National Offer Day
All parents who complete a secondary application form will be told of the allocated high school on this day.

If agreement is not made parents have the right to appeal through the school admissions appeal procedure (see page 20)
OR
SENDIST (see page 37) & should consult with Parent Partnership

Following the allocation of a place, further transition arrangements should be made with the SENCo of the named High School and Primary School at the **Y6 Annual Review**

Parents have full responsibility for transport arrangements when their child attends, by parental preference, a school other than the one provided for their child's home address.
See page 41 for more details

Further information and advice is available from The Children and Young People's Services Directorate, Herefordshire Council, PO Box 185, Hereford HR4 9ZR. Telephone 01432 260869

11: Special Schools, classes and centres

A child must have a Statement to SEN attend a Special School.

Special Schools for children and young people with Severe Learning Difficulties (SLD) or Profound and Multiple Learning Difficulties (PMLD)

Hereford

- Barrs Court School
Barrs Court Road
Hereford HR1 1EQ
Telephone 01432 265035

Age Range 11-19

Leominster

- Westfield School
Westfield Walk
Leominster
Herefordshire
HR6 8HD
Telephone 01568 613147

Age Range 5 -19

Special Schools for children and young people with Behavioural, Emotional & Social Difficulties (BESD)

- The Brookfield School
Grandstand Road
Hereford
HR4 9NG
Telephone 01432 265153

Age range 5-16

Mainstream School with specialist provision

The Bridge

The Bishop of Hereford's Bluecoat School
Hampton Dene Road
Tupsley
Hereford
HR1 1UU
Telephone 01432 347500
Age Range 11-16

The Bridge is dedicated provision for young people with autism in Key Stages 3 and 4. It is based at the Bishop of Hereford Bluecoat School in Hereford.

12: TRANSPORT FOR PUPILS AND STUDENTS WITH SPECIAL EDUCATION NEEDS

12.1 What transport assistance is available for pupils attending Special Schools?

Special education provision in Herefordshire is explained in Chapter 10.

In the case of pupils with a Statement of SEN the Council may when appropriate:

- i) provide free daily transport to the nearest appropriate school/centre if they live more than the normal walking distances defined for primary and secondary pupils, or if walking is too difficult for the child (there may be advantages for a child's development if they are able to make their own way to school, accompanied by a parent if necessary);
- ii) provide transport at the beginning and end of terms and at half terms for pupils attending residential establishments;
- iii) provide other types of transport assistance where necessary in relation to residential schooling, including transport for parents and children for pre-admission assessments (in-County and one out-County) and for subsequent case conferences/reviews - if necessary reasonable overnight accommodation costs will be met by the Council.

Parents often prefer to make their own arrangements to take their children to Special Schools and centres, rather than use the transport provided by the Council, to enable daily contact with the school staff to be maintained more easily. Where that is agreed to be more appropriate for the child, a mileage allowance would be available to the parents if walking were too difficult for the pupil.

It is important to note, however, that parents have full responsibility for transport arrangements when their child attends, by parental preference, a school other than the one provided for their child's home address, or for their child's type of SEN. In a few such cases, it may be possible for parents to pay to use spare seats that are occasionally available on school transport on the terms indicated in paragraph 5.8 above.

In most cases where transport is provided escorts are employed, if necessary, to supervise the children on their journeys to and from school and safety equipment, such as harnesses, is made available on all vehicles if needed.

This provision of transport would not normally be written into the Statement of SEN but would usually be discussed at Annual Review to ensure adequate and appropriate use of resources.

12.2 What transport assistance is available for post-16 Students with Special Education Needs?

In the case of students with SEN, in the age range 16 years to 25 years on 1st September, free transport is provided to the appropriate school or further education institution, irrespective of the normal statutory walking distances defined for primary or secondary pupils, if walking is too difficult for the student. Students cease to be eligible at 31st August following their 25th birthday.

Some further education institutions consider that use of public transport is part of independence training for a student with special educational needs.

The range and nature of help provided with transport for out-County placements is outlined in the following paragraphs.

12.3 Journeys supported for post 16 students (and parents where appropriate)

Transport assistance may be given, in appropriate cases:

- (a) to view a college prior to a firm application;
- (b) to and from college each day or (in the case of residential courses) at the beginning and end of terms and at half terms;
- (c) to attend a period of assessment required as part of the application and recruitment process;
- (d) to attend any necessary case conferences and reviews.

The location of some colleges occasionally requires reasonable overnight accommodation costs to be met. Such costs are limited to the student and his/her parents only.

12.4 Types of travel assistance for post 16 students:

- (a) if the Council provides transport through the Post 16 Partnership, students are expected to use it;
- (b) if students are capable of using public transport independently, they are expected to do so - some colleges regard use of public transport as part of their students' training;
- (c) minibuses or taxis are arranged, with escorts when necessary, by the Transport Team;
- (d) if it is necessary for private transport to be used, a mileage rate is paid.

13: DO YOU HAVE A CONCERN OR COMPLAINT ABOUT YOUR CHILD'S SCHOOL

If your child attends a maintained school in Herefordshire and you are unhappy about any aspect of their education, you should refer to the school's prospectus. The prospectus will tell you how to register a concern or complaint. However, schools and local authorities are expected to provide parents with good opportunities to raise issues of concern through the following general procedures.

Step 1

- **Talk to the teacher about your concerns** and explain them carefully. (Often this is all that is needed to find a solution)

Note: In large primary and high schools it may be appropriate for your concerns to be dealt with by a senior member of staff such as a Deputy or Head of Year. This procedure may be necessary before the Headteacher becomes involved.

If you still have concerns and do not feel that the teacher has addressed them adequately.

- **Make an appointment to talk to the Headteacher.** Say that you have already talked to the teacher but you still have concerns.
- Discuss the matter with the Headteacher.

If you still have concerns and do not feel that the Headteacher has addressed them adequately.

Step 2

- **You should write to the Chair of Governors** of your child's school. The address is available from the school or from Governor Services in the Children's Services Directorate, on 01432 260929. Depending on your complaint, the chairman may refer the matter to a committee of the Governors.
- Your letter should state clearly the concerns that you have and should contain all the relevant facts of which you are aware. If possible, include dates, times and the names of staff and/or pupils who know about the matter.

If you do not feel that the Governors have addressed and dealt with your concerns to your satisfaction.

Step 3

- You can refer your concerns to the Children's Services Directorate (contact details on the front of this leaflet) who will look into the matter. Sometimes the Diocesan Director of Education may also become involved in Catholic or Anglican Church schools.

Your letter should state clearly the concerns you have and should contain all the relevant facts. If possible, include dates, times and the names of staff and/or pupils who know about the matter.

- Your letter of complaint will be acknowledged and will be passed to an appropriate member of staff for their attention.

- This officer will investigate the complaint and speak to the people involved.
- You will receive a written response to your complaint letting you know what action, if any, will be taken.

We will deal with your complaint as quickly as possible. However, in some cases, when complex issues are involved, it may take some time to complete the inquiries.

There may be other areas of concern, which do not directly involve a school and do not need to be dealt with as outlined in this leaflet. In such cases you are advised to telephone the following numbers:

Exclusions from Schools

Manager of Pupil, School and Parent Support 01432 260816

Pupil Admissions to Schools

Admissions and Transport Manager 01432 260927

School Transport

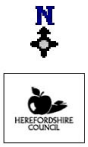
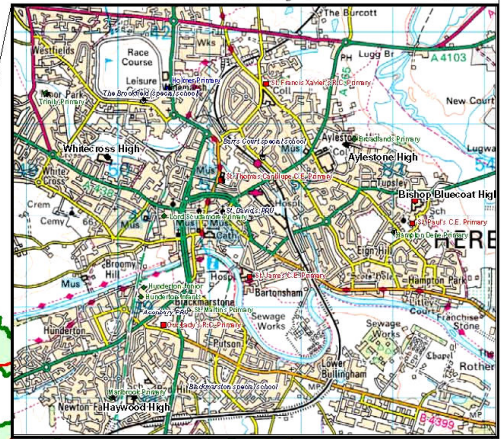
Transport and Admissions Officer 01432 260931

Advice and support can also be obtained from the **Parent Partnership Services** on 01432 260995

HEREFORDSHIRE

Distances from Hereford City in brackets (e.g. Leintwardine (25m))

Hereford City (Scale 1:50,000)



LOCATION PLAN - Herefordshire (showing 103 LEA Schools)
Voluntary Schools = Blue Aided Schools = Red
SCALE 1:200,000
 (839 sq. miles)
 Pupil density = 28 per sq mile (second lowest in England after N.Yorks' = 27)

Herefordshire Council
 Children & Young People's Directorate
 PO Box 185
 Blackfriars Street
 HEREFORD
 HR4 9ZR
 Tel.: (01432) 260900
 Fax.: (01432) 260957

Open Days / Evenings 2011 Phase Transfers 2012-2013

School

Open Day

Open Evening

Queen Elizabeth, Bromyard

Aylestone High, Hereford

Bishop Bluecoat, Hereford

The Hereford Academy

St Mary's RC High, Lugwardine

Whitecross High, Hereford

Kingstone High, Kingstone

Lady Hawkins, Kington

John Masefield, Ledbury

The Minster College, Leominster

Fairfield High, Peterchurch

John Kyrle High, Ross

Weobley High, Weobley

Wigmore High, Wigmore